

A low-angle photograph of an industrial facility, likely a refinery or chemical plant. The image shows a complex network of pipes, scaffolding, and structural steel. A large red crane is positioned in the upper left, lifting a large, cylindrical component with red and white stripes. The sky is a clear, bright blue. The overall scene conveys a sense of heavy industrial work and engineering.

PRODUCT RANGE

 **PEINEMANN**
EQUIPMENT

BUILT FOR THE TOUGHEST JOBS

CLEANING & EXTRACTING

2024



BUILT FOR THE TOUGHEST JOBS



PEINEMANN EQUIPMENT

As a leading provider in the industry, Peinemann Equipment takes pride in offering a comprehensive range of specialized equipment, built for the toughest jobs to maximize efficiency, enhance safety and tackle the distinct challenges of cleaning, extracting and lifting operations.

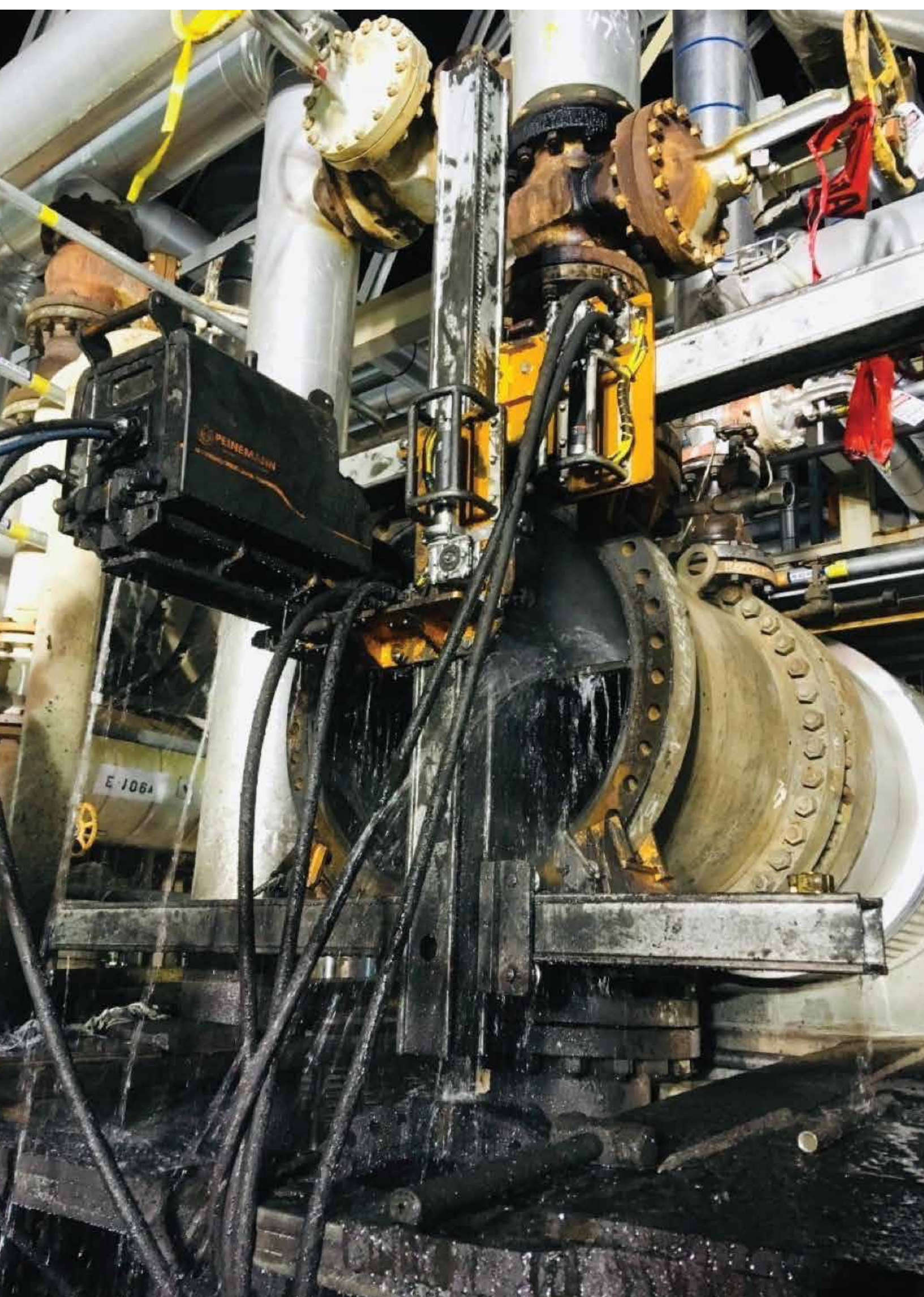
Our equipment is divided into three categories: cleaning, extracting and specials. The cleaning category includes high-pressure lance cleaners, as well as inside and outside bundle cleaners for wash bay cleaning. In the extracting category, we offer advanced aerial bundle extractors, lifters and combi lifters, as well as self-propelled extractors for seamless bundle handling. Our special category includes versatile multi lifters, designed to meet various industrial lifting needs.

Drawing on our extensive field experience, each product has been thoughtfully designed to surpass industry standards. We encourage you to explore the diverse solutions we offer and experience the unparalleled efficiency, safety and performance that have established Peinemann Equipment as a trusted partner in the industry—consistently prepared for the toughest jobs.

CLEANING

Our cleaning equipment is built to tackle tough dirt and contaminants found in bundles and pipes. With innovative designs and cutting-edge technology, our equipment provides unmatched versatility and safe cleaning.

- Extensive service and parts network
- Versatile design for various cleaning applications
- Powerful and durable equipment to tackle the toughest jobs



1-XS HANDHELD SETUP

The Peinemann Single Lance Feeder (1-XS) from the XS series stands as the lightest tube feeder in the Peinemann product range. Built with our most dependable components, the 1-XS weighs a mere 6.0 kg (13.2 lb) while maintaining superior strength. The 1-XS features a versatile design that is compatible with a wide range of hose sizes from 3/2 to 6/2 and utilizes tracks on the bottom and rollers on top making it very easy to maintain. Its modular design enables tool-free parts replacement and easy maintenance, while the compact design accommodates operation in restricted and demanding spaces.



1-XLTC HANDHELD SETUP

The Peinemann Single Lance Feeder (1-XLTC) is from the XLTC series. The 1-XLTC weighs 10kg (22lb) and utilises tracks on the top and bottom which interlink fortifying its strength making it very powerful. The 1-XLTC features a versatile design that is compatible with a wide range of hose sizes from 3/2 to 8/4. The modular components enable quick replacement and easy maintenance, while the compact design accommodates operation in restricted spaces. Its versatility is demonstrated by how seamlessly adapted it is for automated pipe cleaning operations.



1-XLTC L PIPE CLEANING SETUP

The 1-XLTC L Pipe Cleaning Setup is equipped with two robust motors, ensuring the power needed to clean the dirtiest pipes. Its slim drive unit and modular components simplify the setup process, allowing for swift and hassle-free assembly. The single lance pipe cleaner is based on the 1XLTC. It is a flexible instrument suitable for 3/8-1/2" hoses with a pull force of 180kg and a speed of 6-35cm/s. Furthermore, the 1-XLTC L offers the versatility to be customized for cleaning large diameter tubes as well.



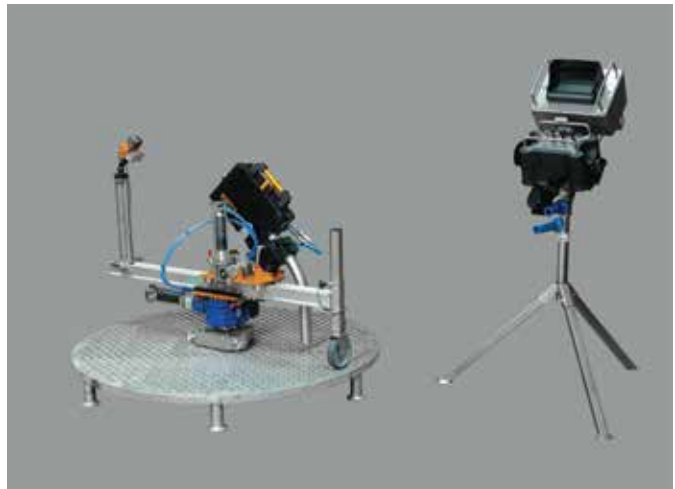
1-XLTC + ORION INDEXER

The Peinemann Orion Indexer is a lightweight, easy-to-transport pneumatic indexing frame that enables operators to work from a safe distance using remote control. It is recommended to use the Orion Indexer with the 1-XLTC for hoses ranging from 3/2 up to 8/4. Additionally, the Orion Indexer is available with a shotgun adapter for cleaning the tube sheet from a safe distance. The Orion Indexer is available with an optional adapter for tube sheet or scaffold mounting for added convenience.



1-XLTC + DOME CLEANER SETUP

The Peinemann Dome Cleaner is a specially designed pneumatic indexing frame that is lightweight and compact. It features a tool-free special 3-pin locking system for effortless setup on a vertical tube sheet and enables operators to work from a safe distance using remote control. It is recommended to use the Dome Cleaner with the 1-XLTC for handling hoses from 3/2 up to 8/4. Additionally, the Dome Cleaner is available with a dual-camera system, which includes a monitor attached to the remote-control stand. The camera setup includes an Air Knife which keeps the camera clear whilst cleaning the tubes. The dome cleaner can also be used with a mounting bracket for horizontal use on heat exchangers.



2-XLTC + 4" FLEXFRAME 3.0 SETUP

The Peinemann Dual Lance Feeder (2-XLTC) from the XLTC series is built for challenging tube cleaning operations. Equipped with an Atlas Copco motor, it delivers up to 50 kg (110 lb) of push/pull force. Its versatile design allows the 2-XLTC to accommodate a broad range of hose sizes from 3/2 to 8/4, and the modular components enable quick replacement and easy maintenance. Conveniently, the 2-XLTC can be converted into a single lance pipe feeder (X-XLTC)



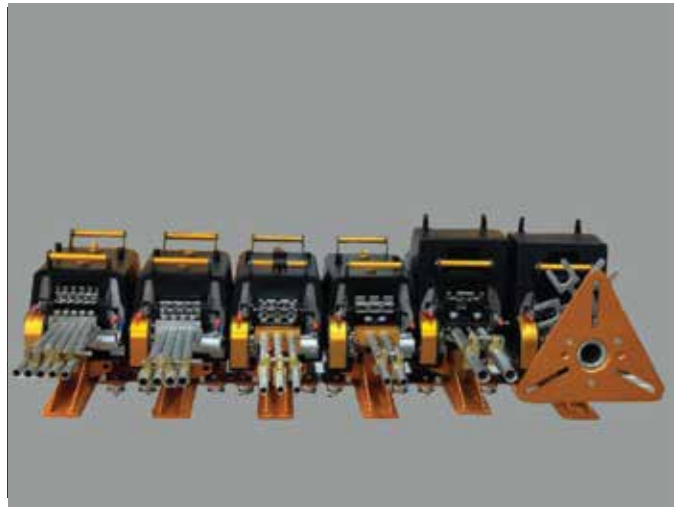
X-XLTC PIPE CLEANING SETUP

The Peinemann X-XLTC is a powerhouse equipped for large and challenging pipe cleaning operations. Equipped with two Atlas Copco motors, this tool offers impressive power up to 180kg (397lbs) push/pull force, effortlessly tackling stubborn contamination, and ensures thorough cleaning results. The X-XLTC weighs 22kg (48lbs), and works with a wide range of hose sizes, such as 1/2", 3/8" & 3/4" and up to DN 20 hose. Operators control the lance movement comfortably using a one-way remote control, that comes with the pipe cleaning set up. Although this feeder is an exceptional choice for pipe cleaning, the X-XLTC can additionally be easily converted into a dual lance tube feeder (2-XLTC).



TLX SERIES

The Peinemann TLX series is known for its lightweight construction, exceptional strength, and versatility. Its cutting-edge modular design integrates ultra-lightweight carbon fiber components, achieving a significant 30% reduction in weight while enhancing overall durability. The advanced interchangeable gear drive system enhances speed by 25% and offers precise power control, enabling up to 130 kg of push/pull force with a single motor. This adaptable design allows seamless configuration for 1 to 5 flex lances and effortless adaptation to various pipe cleaning applications, making the TLX series a powerhouse solution for diverse industrial needs.



4" FLEXFRAME 3.0 SETUP

The Peinemann Triple Lance Feeder (3-TLX) paired with the 4" Flex Frame 3.0 features an innovative design and durable components that allow for precise motorized indexing. The Flex Frame 3.0 provides a 10% extended range in all directions compared to earlier models, and the feeder can be mounted on either side of the up/down assembly. The Flex Frame 3.0 comes equipped with 4" rails as standard but can also be effortlessly adapted to accommodate 2.5" rails.



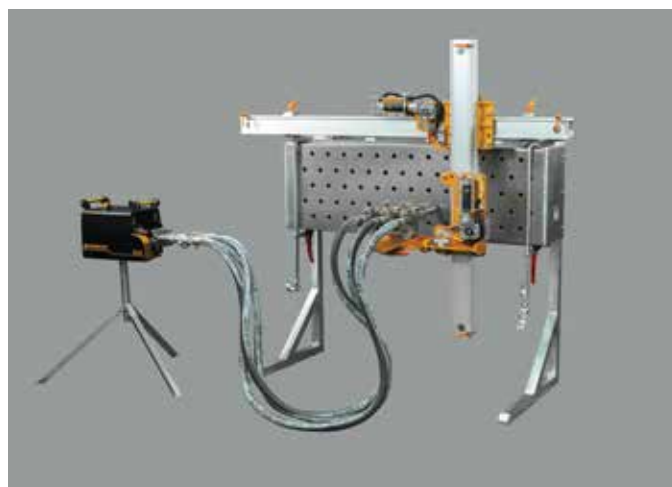
2.5" FLEXFRAME 3.0 SETUP

The Peinemann Flex Frame 3.0 with 2.5" rails offers efficiency, versatility, and ease of assembly. Its innovative design and durable components enable precise motorized indexing. The modular features of the Flex Frame 3.0 make it highly adaptable and compatible with various Peinemann cleaning equipment, including the TLX and XLTC models. It can accommodate a wide range of hose sizes, from 3/2 to 8/4. The feeder can be mounted on both sides of the up/down assembly, expanding the operational range and flexibility.



FLEXFRAME 3.0 ON AIRFIN COOLER WITH SNORKEL HOSES

The Peinemann Flex Frame 3.0 with 4" rails can be securely mounted onto the header box of an airfin cooler using C-clamps. The TLX feeder can either be directly mounted onto the Flex Frame or positioned remotely and connected via a Snorkel System. This setup includes all necessary components for effectively cleaning Fin Fan Tubes and is specifically suitable for use with the 3-TLX configuration.



FLEXFRAME 3.0 ON SCAFFOLD FRAME

The Flexframe is commonly mounted on a scaffold frame, and the H-Frame Setup seamlessly integrates with the Flex Frame 3.0 (featuring 4" rails), offering all essential components to efficiently clean various design bundles regardless of size, orientation, or layout. With minimal additional components added to the Flex Frame 3.0 setup, the scaffold frame provides an ideal solution for cleaning operations, enabling easy movement between different bundles at a cleaning pad.



1-TLX PIPE CLEANING SETUP

The Peinemann Single Lance Feeder (1-TLX) from the TLX series stands out as the lightest, strongest and most versatile pipe feeder in the industry. The interchangeable gear drive system offers 25% additional speed and power control, delivering up to 200 kg of push/pull strength in slow gear mode, making the 1-TLX an all-in-one powerhouse. Its versatile design allows the X-XLTC to work with a broad range of hose sizes: 3/8", 1/2" and 3/4". It can additionally be easily configured into a 2, 3, 4 or 5 lance feeder.



TRIPLE LANCE FEEDER (3-TLE COMBI)

The Peinemann Triple Lance Feeder (3-TLE COMBI) from the TLE series is an incredibly versatile piece of tube cleaning equipment that can work with both flex and rigid lances. This feeder boasts two powerful motors that generate up to 250 kg (551 lb) push/pull force, ensuring highly efficient cleaning processes. The 3-TLE COMBI is ideal for use in various applications, including vertical setups, and its modular design enables quick assembly and easy maintenance.



QUINTUPLE LANCE FEEDER (5-TLE)

The Peinemann Quintuple Lance Feeder (5-TLE) from the TLE series is an incredibly effective and efficient piece of tube cleaning equipment, designed to handle the cleaning of bundles using up to five flex lances simultaneously. The 5-TLE can use five flex lances for cleaning larger diameter bundles, or three flex lances when cleaning smaller diameter bundles and fin fan coolers. Its compact design makes the 5-TLE the perfect equipment for cleaning fin fan coolers, as it can



OUTSIDE BUNDLE CLEANER (OBC-C)

Introducing the Peinemann Outside Bundle Cleaner (OBC-C), an innovative solution that delivers efficiency, reliability, and safety in industrial cleaning operations. Designed specifically to clean the shellside and tube sheet, the OBC-C offers the option to include rotating nozzle heads, enhancing its cleaning capabilities. Versatility is a key feature, as the OBC-C can be powered by either a diesel or electric power unit, providing flexibility to suit different operational requirements. Furthermore, the OBC-C is CE certified, guaranteeing compliance with rigorous European standards for safety and quality. Each unit is meticulously assembled in the Netherlands, ensuring consistent high quality and reliability in performance.



OUTSIDE BUNDLE CLEANER CABIN

The Peinemann Outside Bundle Cleaner Cabin introduces features that enhance performance while prioritizing operator safety. One standout feature is its enhanced operator safety: the cabin can tilt up to 10 degrees, optimizing visibility and shielding operators from high water pressure and contaminants during operation. Additionally, the OBC-C offers centralized control, allowing all cleaning functions to be managed conveniently from the cabin. This streamlined approach boosts operational efficiency and ensures adherence to optimal safety protocols.



IBC-5 INSIDE BUNDLE CLEANER (IBC-5)

Introducing the Peinemann Inside Bundle Cleaner (IBC-5), a highly efficient rigid lance machine designed for demanding cleaning tasks during turnarounds, enhancing wash bay operations significantly. Featuring a top-mounted cabin for optimal tubesheet visibility, the IBC-5 cleans five tubes simultaneously at pressures up to 1,400 bar (20,300 Psi) with a recommended flow rate of 200-260lpm. Powered by diesel or electric units, this versatile cleaner navigates tight spaces while ensuring thorough cleaning. Its modular design allows for quick component replacement and easy maintenance, minimizing downtime and maximizing performance.





EXTRACTING

With 40+ years of turnaround experience, we are a trusted supplier of cranes and specialized extraction equipment. Our expertise enables us to offer safe and efficient bundle extraction, lifting and transportation solutions.

- Designed with 40+ years of field experience
- Extensive expertise, service and training network
- Innovative and durable equipment for the toughest jobs



BUNDLE LIFTER (30 TONS)

The Peinemann Bundle Lifter 30 tons is the perfect lifter for wash bay operations during busy turnarounds. It can effortlessly lift bundles with a diameter of up to 1.8 meters and a maximum weight of 30 tons. The lifter can lift bundles from rollers, extractors and trailers without requiring additional accessories. This eliminates the need for heavy and dirty slings, improving operator ergonomics and safety while avoiding potential damage to the tubes. The lifter can be operated by a single operator using a remote control, providing maximum convenience and safety.



COMBI LIFTER (30, 53 & 70 TONS)

Peinemann's Combi Lifters are available in three different sizes with a capacity of 30, 53 and 70 tons, making them compatible with our standard 25, 45 and 60 tons Aerial Bundle Extractors (ABE). The Combi Lifters offer great versatility, functioning as part of the ABE (main lifting frame) and as a separate Bundle Lifter when disconnected from the ABE. The lifter can lift bundles from rollers, extractors and trailers without requiring additional accessories. This eliminates the need for heavy and dirty slings, improving operator ergonomics and safety while avoiding potential damage to the tubes.



AERIAL BUNDLE EXTRACTOR (15 - 125 TONS)

The Peinemann Aerial Bundle Extractors come in a range of capacities from 15 to 125 tons, ensuring there is a solution for every need. These extractors are designed to be highly reliable and durable, with a high-power winch that makes it easy to extract and insert the dirtiest bundles in the toughest conditions. Additionally, the Aerial Bundle Extractor can pull bundles at any height with crane support, adding to its versatility and ease of use. The design of the Aerial Bundle Extractor is based on years of experience in the field, ensuring optimal performance and safety.



TRUCK MOUNTED EXTRACTOR

The Peinemann Truck Mounted Extractor is a versatile piece of equipment designed for efficient and safe bundle extraction, insertion and transportation. Its hydraulic suspension ensures a smooth ride during transportation, and it is road legal for easy transport to and from job sites. The Truck Mounted Extractor can handle bundles up to 20 tons and can extract even the most resistant bundles with its powerful winch. With three heavy axles and four outriggers, the truck remains stable during operations, ensuring safe and efficient bundle extraction and insertion. In addition, it eliminates the need for a crane, reducing the risk of bundle damage and making it a cost-effective solution for busy turnarounds.



SELF-PROPELLED BUNDLE EXTRACTOR

The Peinemann Self-Propelled Bundle Extractor (SPBE) is a compact and versatile piece of equipment designed for efficient bundle extraction in hard-to-reach areas and under pipe racks. With a maximum bundle capacity of 25 tons, height capacity of 6 meters, and length capacity of 8 meters, the SPBE can handle a wide range of bundles during turnarounds. It is dual-steered for greater maneuverability and can be operated by a single operator. Additionally, it can be used to transport bundles to the cleaning bay, reducing the need for additional equipment and streamlining the turnaround process.



SELF PROPELLED REAR MOUNTED BUNDLE EXTRACTOR 20T (SPRM20)

The Peinemann SPRM20 combines the unique features of a Truck Mounted Extractor and a Self Propelled Extractor. This makes it ideal for extraction in tight spaces as bundles can be extracted from the rear. The Pull Car can pull from both sides and has a Side-Shifting Pull Hook. This vehicle can handle bundles up to 20 MT (44,092lbs) at maximum height, with a maximum length of 8 metres (26.25ft). Furthermore, it can be transported with greater ease on a lowbed trailer; the width of the unit is 2.5 metres (8.17ft) which does not require an oversized permit. The maximum height from where the bundles can be extracted is 5.25m (17'3") and a minimum height of 0.49m (19").



CRAWLER

The Peinemann Crawler is a highly maneuverable self-propelled extractor designed to extract bundles of up to 8 meters in length and with a maximum weight of 25 tons. The standard Crawler has a max. working height of 6 meters. Its unique 180-degree steering system enables it to drive sideways and turn in a very short radius, allowing it to easily access and extract bundles in the most challenging spots. Additionally, the Crawler eliminates the need for a crane during bundle extraction and insertion. For even tighter spaces, there is a Crawler Low Version which can operate at a max. working height of 4.0 meters.



FURNACE TUBE EXTRACTOR

The Peinemann Furnace Tube Extractor is a versatile, efficient and safe piece of equipment specifically designed for extracting and inserting furnace tubes. It's available in two versions, 12M and 21M, designed to handle furnace tubes up to 14.9 meters and 24.5 meters, respectively. The extractor consists of multiple pieces that can be configured to fit the specific job requirements, minimizing the need for scaffolding. Additionally, the extractor is remote-controlled, providing increased operator safety.



STRADDLE CARRIER

The Peinemann Straddle Carrier is a versatile and efficient solution designed to transport bundles on pallets to and from the wash bay in plants. Its linked four-wheel steering system allows for easy maneuverability, and its unique straddling design eliminates the need for cranes or forklifts, saving time and increasing efficiency during turnarounds. With a maximum bundle weight of 25 tons and bundle diameter of 1.8 meters, the Straddle Carrier is a reliable and cost-effective solution for transporting bundles in plants. Its transport height of 3.8 meters also adds to its versatility.



SPECIALS

Experience our innovative and durable equipment, designed for special lifting operations. With continuous development driven by client needs, we deliver advanced solutions that prioritize safety, efficiency and ease of use.

- Durable equipment for challenging jobs
- Continuous development for optimal solutions
- Enhanced safety through advanced innovations and standards



MULTILIFT 533

The Peinemann Multilift 533 is a highly adaptable and compact lifting solution for handling electric motors and other industrial components in hard-to-reach areas up to a height of 2.95 meters. With a maximum weight capacity of 500 kg and a lightweight design of only 150 kg, it is both powerful and maneuverable. It is operated with a straightforward yet durable hydraulic handpump. The Multilift 533 comes standard with a lifting hook to lift objects in hard-to-reach areas. Further, the optional turn table can be used for exchanging registers in burners.





PEINEMANN

Peinemann Equipment is a division of Peinemann, a leading global one-stop-shop provider of innovative and comprehensive solutions for a diverse range of industries, including ports, industry, logistics and construction. With over 69 years of experience, Peinemann has established a strong reputation as a trusted and reliable partner to businesses seeking to optimize their operations and achieve long-term success.

Peinemann offers a wide range of products and services, such as rental, sales and maintenance of equipment like cranes, forklifts, electric tractors, warehouse equipment, elevated work platforms, container handling equipment and bundle cleaning & extracting equipment. Additionally, Peinemann provides solutions including engineering, bundle extracting, industrial relocations, construction logistics and terminal maintenance. Through the commitment to excellence and continuous improvement, Peinemann is dedicated to meeting the evolving needs of its customers and delivering superior value.

4

MARKETS

- Ports
- Industry
- Logistics
- Construction

5

SOLUTIONS

- Engineering
- Bundle extracting
- Industrial relocations
- Construction logistics
- Terminal maintenance

7

TYPE OF MACHINES

- Sales and rental
- Maintenance
- Cranes
- Forklifts
- Tow tractors
- Aerial work systems
- Warehouse equipment
- Container handling equipment
- Bundle extracting and cleaning



PORTS



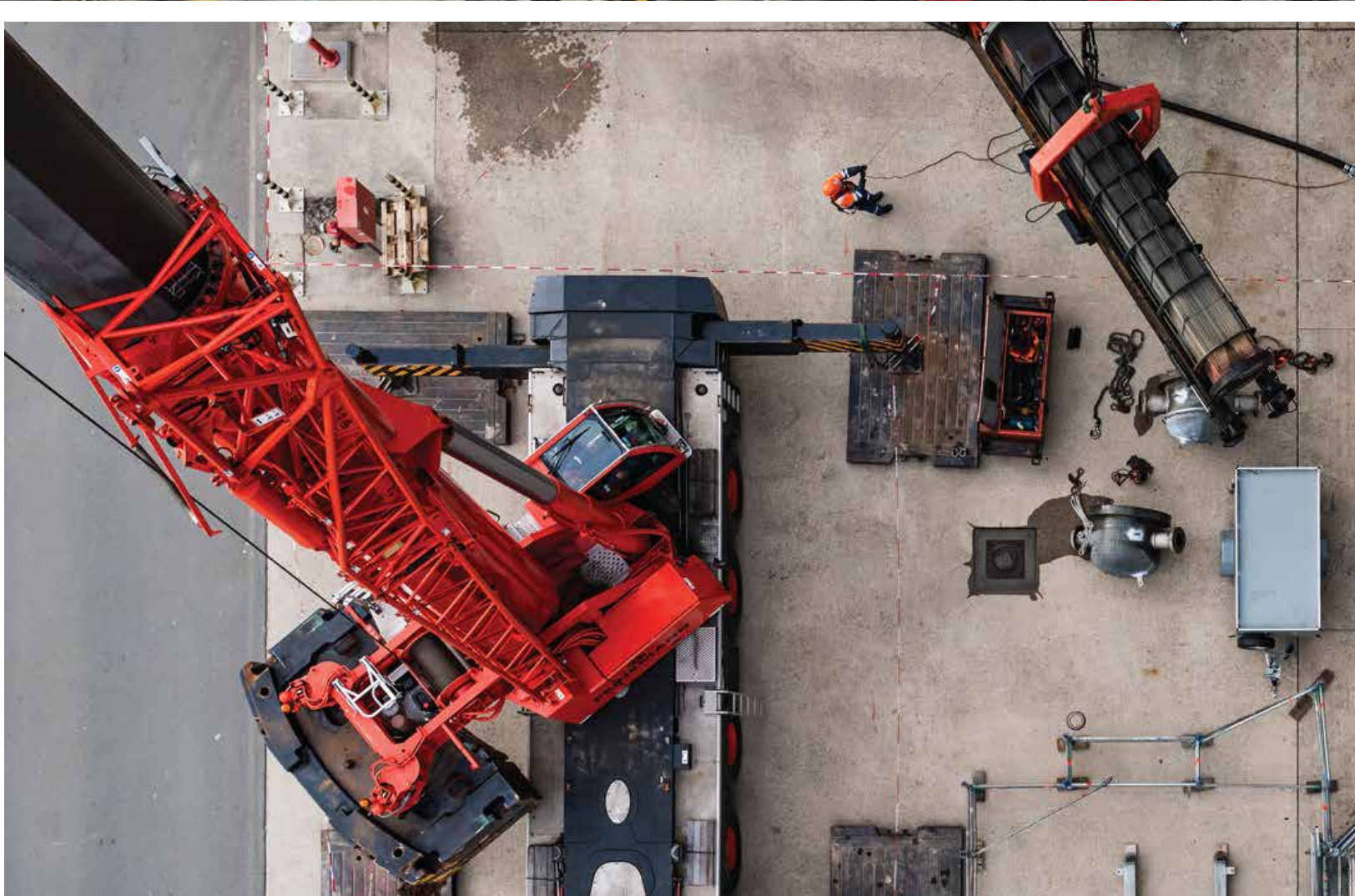
INDUSTRY



LOGISTICS



CONSTRUCTION









Contact information

Mailbox 189
3190 AD
Hoogvliet, Rotterdam
The Netherlands

+31 (0)10 - 295 5000
equipment@peinemann.nl

2024

