



Asia Waterjet Equipment

HIGH PRESSURE WATERJET EQUIPMENT RENTAL & SERVICES



What We Offer

HIGH PRESSURE PUMP RENTAL 15,000 - 40,000psi

The right pressure for the job - without the capital outlay. Our rental fleet of Jetstream triplex jetting pumps are ready to deploy on scopes including surface preparation, industrial cleaning and tank cleaning.

From 15,000psi for use in cleaning and washdown applications to 40,000psi ultra-high pressure for the most demanding jobs such as coating removal and abrasive cold cutting - every unit is maintained to the highest standard.

INTEGRATED INSPECTION AND CLEANING SOLUTIONS

Caisson and Pipeline Maintenance

By combining our expertise in waterjetting and our partners experience in robotic and advanced NDT inspection, we aim to streamline asset integrity management, reduce downtime and enhance safety for clients in energy and industrial sectors.



- 150-700hp units
- Short and long-term rental available
- Technical support always on hand, with the option of experienced operators
- Rapid mobilisation across the region





MAGTRACK MAGNETIC CRAWLER RENTAL

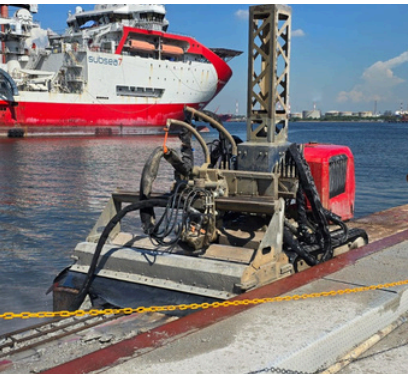
Robotic Surface Preparation

The MagTrack magnetic crawler adheres to vertical and overhead steel surfaces - ship hulls, storage tank shells, structural steelwork - removing paintwork, coatings and marine fouling consistently and safely, without the need for scaffolding or manual intervention.

- Faster, more consistent surface profile than manual blasting
- Configurable with swing arm for open blasting or vacuum dome with vacuum recovery system for a clean, debris free worksite
- Abrasive blast option available

SUITABLE FOR

DRYDOCKS - SHIPYARDS - TANK FARMS - OFFSHORE STRUCTURES



HYDRO-DEMOLITION SERVICES

Controlled Concrete Removal

With over 20 years of selective concrete removal using high pressure water and having worked on some of the largest projects in the Middle East and South East Asia, we offer expert advice and hydro-demolition equipment and services:

Aquajet Ergo - A revolutionary alternative where a compact, manoeuvrable system is required:

- Offers four times the power of hand lancing in a compact unit
- Attaches to standard scaffolding pipes, making for quick and easy set up

Aquajet Aquacutter 710 - The most versatile hydro-demolition robot on the market - covering horizontal, vertical and overhead areas:

- 25x faster operations than handheld jackhammers
- Rebar is cleaned without any damage using pressures up to 40,000psi

www.asiawaterjet.com

PIPE & TUBE CLEANING EQUIPMENT

Automated Cleaning Solutions

The Peinemann range of automated tube cleaning systems are ideal operating in tight and challenging areas. Lightweight yet strong and durable components make them a reliable and dependable choice for various tube and pipe cleaning applications.

- Hands-free, automated operation keeps operators away from high-pressure hazards
- Consistent lance speed in and out delivers a uniform clean across every tube



ABRASIVE COLD CUTTING SYSTEM

Flexible Abrasive Cutting

The DERC Salotech Flexa-Jet system uses ultra-high pressure water mixed with abrasive to cut through virtually any material - cleanly, precisely, and without generating heat, sparks or ignition sources.

SUITABLE FOR

REFINERIES & PETROCHEMICAL
PLANTS - OFFSHORE PLATFORMS -
DRYDOCKS - SHIPYARDS





Why AWE?

- Fleet of specialised equipment & experienced operators
- Customised solutions to suit operational requirements
- 35+ years of pump and waterjetting expertise
- Partnered with industry-leading brands including Jetstream of Houston, Peinemann, DERC Salotech and TST Sweden
- Local teams, fast response, rapid mobilisation

Built for challenging environments

We combine high pressure waterjet equipment, industrial robotics and deep technical expertise to help you work safer, faster and smarter.

Sectors we serve

**ENERGY &
PETROCHEMICAL**



**MARINE &
OFFSHORE**



**CONSTRUCTION &
INFRASTRUCTURE**



**MUNICIPALITY &
WASTEWATER**



INDUSTRIAL



**MINING &
QUARRY**



**FACILITY
MANAGEMENT**



Visit our website
for more
information on
the applications
we support



www.asiawaterjet.com

We're here when you need us

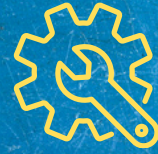
Being close to the customer matters. With regional presence in the UAE, Saudi Arabia and Malaysia, and teams operating across the Middle East and Southeast Asia, AWE is positioned to respond quickly - whether that's getting a pump on site, supporting a planned shutdown, or mobilising on an emergency job.



LOCALISED



SPECIALISED



CUSTOMISED

Locations

UAE

Warehouse TA1-TA2,
Jebel Ali Free Zone,
PO Box 18412
Dubai
United Arab Emirates

T: +971 4 881 0060

KSA

Building 2791 - 120A St.
Support Industries Area
No. 1, Eastern Region,
31961, Jubail,
Kingdom of Saudi Arabia

T: +966 1 3367 3337

MALAYSIA

No 7, Jalan PJS 11/20
Bandar Sunway
47500,
Subang Jaya
Selangor, Malaysia

T: +60 374 966 107

Contact us

Middle East: sales@asiawaterjet.com

South East Asia: asiasales@asiawaterjet.com

www.asiawaterjet.com